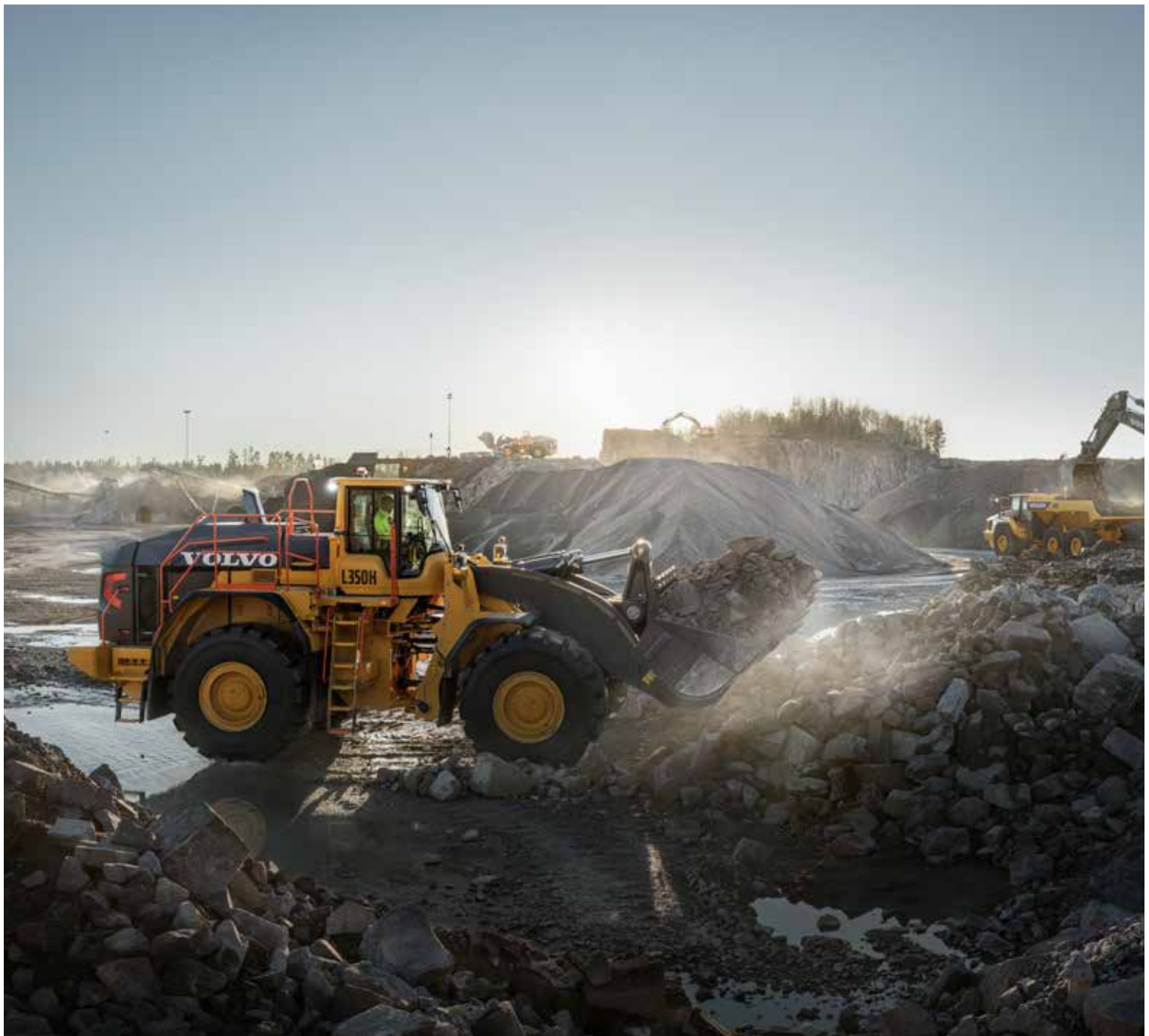




Volvo Construction Equipment

L350H

Volvo Wheel Loaders 50.0-56.3 t / 110,231-124,120 lb 532 hp



**THE BEST JUST
GOT EVEN BETTER**



Smarter, faster and tougher than the L350F, the L350H has been built on the success of its forerunner, first introduced to the market in 2007. Upgraded with the latest innovative technology, the L350H is ready to tackle a range of applications, from mining and quarrying to heavy infrastructure.

Lowering your total cost of ownership

As your trusted partner in production, Volvo is here to support you with the best equipment for the job. Boasting a comprehensive portfolio of attachments designed to complement your machines performance, as well as a range of services to boost your profitability, we'll help you tailor the perfect package to suit your business needs.

L350F across the world

A machine that's always in demand, over 700 L350F wheel loaders are being put to work in 50 countries across the world, and have so far accumulated 6 369 606 operating hours – ranging from 290 to 48 000.



“ ”

L350F in action

“We like their speed, their uptime and their fuel efficiency.”

Dan Johnson, Vice president of equipment for William Charles Purchasing Inc (USA)

“It's been very, very dependable. I've got no complaints. I'd recommend it to anybody.”

Larry Anderson, Manager, Monteagle Sand LLC (USA)



BOOST YOUR PRODUCTIVITY BY UP TO 5%

Increase your productivity by up to 5%. Next generation load sensing hydraulics have been designed to enhance the responsiveness of the attachment and reduce cycle times, by improving the lifting and lowering speed of the boom.



Stronger and smarter

Primed for productivity, the intelligent L350H combines the latest Volvo technology with power and comfort. To achieve ultimate performance, select from a range of tailor-made Volvo attachments.

Easy operation

Customize your machine with a choice of three hydraulic modes to suit your preferred responsiveness – soft, normal or active. To reduce operator fatigue and improve productivity, Comfort Drive Control gives you the opportunity to steer the machine from a small lever – particularly effective for fast-paced truck loading operations.



Matched and attached

Get the most out of your L350H with our range of purpose-built attachments, perfect for applications such as block handling, logging and slag handling. Form one solid and reliable unit with attachments that are ideally matched by size and design to your machine's parameters – including link-arm geometry, and breakout and lifting forces.



Designed to perform

Achieve unrivalled performance thanks to the drivetrain, specially developed by Volvo, to work in harmony with the hydraulic system on a range of demanding applications. Offering the perfect combination of power and control, the L350H has been designed to boost productivity.



Power up, fuel down

Engineered for efficiency, the L350H is fitted with a powerful Volvo engine and new generation hydraulics. Decrease cycle times and fuel consumption with intelligent machine monitoring and available operator training.

Eco pedal

Save on machine wear and increase fuel efficiency with the eco pedal. Uniquely designed by Volvo, the eco pedal encourages economical operation, by applying a mechanical push-back force in response to excess use of the accelerator.



Train for efficiency

Increase productivity and reduce fuel consumption by learning how to operate your wheel loader in the most efficient way. Volvo offers operator training, which encompasses the best practices in the industry.



Machine monitoring made easy

Keep on top of unscheduled downtime and check that your machine is being operated efficiently with CareTrack – Volvo's state-of-the-art telematics system. Stay informed and receive reports including fuel status, machine location and hours, so you can optimize your productivity and save money.



Volvo Site Simulation

Lower your cost per ton and gain valuable insight into your operations, with Volvo Site Simulation. Using detailed information about your machinery, fleet choices and site configuration, we'll devise a list of personalized recommendations to increase the efficiency and profitability of your operation.



UP TO 20% GREATER FUEL EFFICIENCY

Do more with less fuel, thanks to redesigned buckets, which are easier to fill. Save hydraulic pump power for other functions, by reducing fluid flow during lowering and dumping operations. Powered by a Tier 4 final engine, delivering high torque at low rpm, the L350H can also be fitted with the option of auto engine shut down, which turns off the machine during prolonged periods of idle.



“ ”

L350F in action

A quarry in the UK used a Volvo L350F to load more than 500,000 tons of blasted limestone a year. The L350F replaced two older machines and was chosen for its excellent fuel economy and an outstanding performance.

BUILT FOR THE JOB

Unlock the full potential of your machine and take on demanding applications, with tailor-made attachments. You can even have your attachment custom built to suit your needs - just talk to your local dealer!



“ ”

L350F in action

Working at one of the biggest wood production sites in Finland, L350F wheel loaders were used to help process over 100 trailers of timber a day. Featuring log grapple attachments for quick and easy log handling these machines worked 24 hours a day in temperatures that often plummeted to -30°C.

For extreme production environments

Working around the clock, the L350H has been put to the test in extreme environments, carrying out operations such as face loading, heavy-duty block handling and log handling. The L350H can be fitted with a range of Volvo attachments, to ensure high reliability and safe operation.

Face-loading and tunneling

For easier filling and up to 15% more productivity, the new Volvo Rock bucket* boasts a longer floor and optimized radius. For tunneling applications, the L350H can also be equipped with a Side Dump Rock bucket. To increase your productivity, the long boom configuration enables the loading of a 65 tonne (70 ton) truck in no more than six passes.



Rehandling

Experience up to 5% greater productivity with the new 10.7 m³ (14 yd³) Volvo Rehandling bucket. The redesigned bucket is easier to fill and minimizes spillage, thanks to new convex sides and the improved spill guard. To enhance productivity and absorb shocks, opt for the Boom Suspension System, which automatically engages depending on gear and speed.



L350H in block handling

For high lifting force and maximum stability in block handling applications, choose from two kit variants – standard or heavy duty – and a range of robust Volvo attachments, including block forks, breaker tine and clearing rakes.



Made to move

MAINTENANCE MADE EASIER

- Maintenance-free rear axle trunnion
- Passive and automatic regeneration
- Redesigned engine side hood panels
- Surrounding walkways

BOOST YOUR PRODUCTIVITY BY UP TO 5%

- Next generation load sensing hydraulics
- Comfort Drive Control
- Three hydraulic mode options
- Matched Volvo attachments

BUILT FOR THE JOB

- Redesigned Rock bucket – boost your productivity by 15%
- New Rehandling bucket – up to 5% more productivity
- Block handling attachments
- Custom built attachments

DURABLE BY DESIGN

- Z-bar lifting arm with double sealing on each pin
- Lifetime Frame and Structure Warranty

VOLVO SERVICES

- Genuine Volvo Parts
- CareTrack
- ActiveCare Direct
- Volvo Site Simulation



THE OPERATOR'S CHOICE

- Easy cab access
- Remote-control door opener
- New adjustable seat
- Upgraded Human Machine Interface

UP TO 20% GREATER FUEL EFFICIENCY

- Easier to fill redesigned buckets
- Saved hydraulic pump power
- Powerful D16 engine, with optional auto shut down
- Eco pedal

SAFE AND SOUND

- Orange handrails and steps
- New rear view mirrors
- Rear-view camera



DURABLE BY DESIGN

Designed with durability in mind, the L350H is built with a Lifetime Frame and Structure Warranty, including the front frame, rear frame, articulation joint and loader arm. The articulation joint offers strength in demanding applications, and the specially designed Z-bar lifting arm has double sealing on each of the pins, for sustained uptime and increased machine life.



“ ”

L350F in action

As part of a fleet of 34 Volvo machines working at a marble mine in Turkey, an L350F proved that its durable components and easy serviceability made it the perfect addition to the team. The owner relied on the L350F to operate under high stress levels and in tough conditions, producing 170,000 tons of marble a year.

Full proof performance

Offering strength in demanding applications, the L350H is built to last. Maintain the life of your machine with simple serviceability and proactive dealer support, as well as flexible maintenance and repair plans.

Minimize downtime

Minimize machine downtime and increase components life thanks to heavy-duty axles with fully floating shafts, planetary hub reduction and maintenance-free rear axle trunnion bearings.



Maintenance made easier

Keep your machine up and running with improved serviceability. Daily routine checks are made easier thanks to engine side hood panels, while essential maintenance points are safely accessed using the surrounding walkway. Passive and auto regeneration automatically cleans the diesel particulate filter (DPF), without compromising machine performance.



ActiveCare Direct

Maximize machine uptime and reduce repair costs with ActiveCare Direct. The intelligent service provides round the clock machine monitoring, as well as customer reports – to help take predictive and preventative maintenance actions.



Here to support you

Maintain productivity and machine uptime with our range of Genuine Volvo Parts – all backed by Volvo warranty, with 24-hour parts delivery guarantee.



Setting the standard

Built with the customer, for the customer, the L350H boasts a range of features to enhance your operating experience. As your partner in production, we'll help to make your business more profitable, whether it's through reducing fuel emissions or supporting you with our range of products and services.

Safe and sound

To enhance visibility, the L350H Volvo cab has a rear-view camera and new rear view mirrors. Orange handrails and steps have also been placed on the machine, intended to stand out to the operators and maintenance staff.



Committed to the environment

Reduce your carbon footprint and fuel emissions between 30% to 90%, by switching to renewable fuels. Confirming its commitment to the environment, Volvo has designed its latest wheel loader to be compatible with HVO alternative fuel.



Volvo Services

To ensure your business runs smoothly, Volvo invests in the intelligent engineering of all our machines – but we don't stop there. As your partner, we support you in how you use the equipment, maintain it, pay for it and even how you sell it. Our portfolio of products and services is designed to complement your machine's performance and boost your profitability.



THE OPERATOR'S CHOICE

Operate in comfort from the best cab on the market. The Volvo cab is equipped with a new adjustable seat and upgraded Human Machine Interface, which comes as standard across all H-series Volvo wheel loaders. Access the cab safely and effortlessly using the steps, and open the door with ease thanks to the remote-control opener.



“ ”

“Basically, I move rock for 10 hours each day so I like the comfort of the Volvo wheel loader. My back doesn't hurt and it is easy to steer with the joystick controls. I really enjoy running it. We are picking up blocks weighing more than 50,000 pounds and the power is still there.”

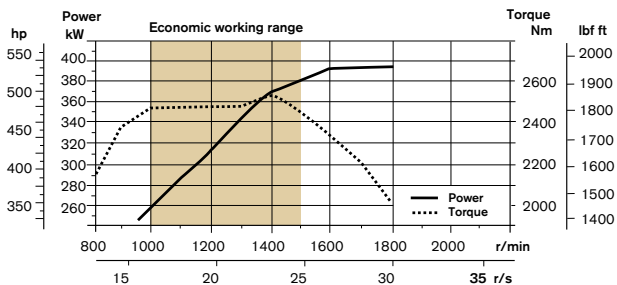
David Porter, loader operator, Colorado Stone Quarries (USA)

Volvo L350H in detail

Engine

V-ACT, 16 liter, 6-cylinder straight VGT (Variable Geometry Turbocharged) diesel engine with 4 valves per cylinder, overhead camshaft and electronically controlled unit injectors. The engine has wet replaceable cylinder liners and replaceable valve guides and valve seats. Cooled EGR (Exhaust Gas Recirculation) and exhaust after treatment with EATS-Muffler (Exhaust After Treatment System) including DOC (Diesel Oxidation Catalyst), DPF (Diesel Particulate Filter) and SCR (Selective Catalytic Reduction) with an electronically controlled UDS (Urea Dosing System). Stage IV/T4f after treatment system features passive DPF regeneration with an AHI (After treatment Hydro carbon Injection) device.

Engine	Volvo	D16J
Max. power at	r/min (r/s)	1,700 (28.3)
SAE J1995 gross	kW (hp)	397 (532)
ISO 9249, SAE J1349 net	kW (hp)	394 (528)
Max. torque at	r/min (r/s)	1,400 (23.3)
SAE J1995 gross	Nm (ft lbf)	2,550 (1,881)
ISO 9249, SAE J1349 net	Nm (ft lbf)	2,532 (1,868)
Economic working range	r/min (r/s)	1,000 - 1,500 (16.7 - 25)
Displacement	l (in ³)	16.1 (982)



Electrical system

Central warning system:
Contronic electrical system with central warning light and buzzer for following functions: - Serious engine malfunction - Low steering system pressure - Overspeed warning engine - Interruption in communication (computer error)
Central warning light and buzzer with gear engaged for the following functions:
- Low engine oil pressure - High engine oil temperature - High charge-air temperature - Low coolant level - High coolant temperature - High crankcase pressure - Low transmission oil pressure - High transmission oil temperature - Low brake pressure - Engaged parking brake - Brake charging failure - Low hydraulic oil level - High hydraulic oil temperature - Overspeeding in engaged gear - High brake cooling oil temperature front and rear axles.

Voltage	V	24
Batteries	V	2 x 12
Battery capacity	Ah	2 x 170
Cold cranking capacity, approx	A	1,000
Alternator rating	W/A	2 280/80
Starter motor output	kW	7

Drivetrain

Torque converter: 3-element, 1-stage, 1-phase torque converter with Lock-Up function and free-wheel stator.
Transmission: Planetary Power Shift transmission with full modulated electronically controlled shifting of 4 gears forward and reverse. Volvo Automatic Power Shift (APS) gear shifting system with fully automatic shifting 1-4 (Lock-Up in 3-4) and mode selector with 4 different gear shifting programs, including AUTO mode.
Axles: Fully floating axle shafts with planetary-type heavy-duty hub reductions. Fixed front axle and oscillating rear axle.
Optional: Limited Slip differentials in front and rear axle

Transmission	Volvo	HTE 400
Torque multiplication, stall ratio		2.65
Maximum speed, forward/reverse		
1st gear	km/h (mi/h)	6.8/7.5 (4.2 / 4.7)
2nd gear	km/h (mi/h)	12.1 / 13.2 (7.5 / 8.2)
3rd gear	km/h (mi/h)	21 / 22.9 (13 / 14.2)
4th gear	km/h (mi/h)	35.7 / 38.2 (22.2 / 23.7)
Measured with tires		35/65 R33 L4
Front axle/rear axle		Volvo AHW 90/AHW 90
Rear axle oscillation	± °	12
Ground clearance	mm (in)	550 (21.7)
at oscillation	°	12

Steering System

Steering system: Load-sensing hydrostatic articulated steering with an accumulator system and a non-pressurized tank.
System supply: The steering system has priority feed from a load sensing axial pump with variable displacement.
CDC: Speeddependent electro-hydraulic power steering system with closed center hydrostatic back-up and end-stroke damping.

Steering cylinders		2
Cylinder bore	mm (in)	110 (4.3)
Rod diameter	mm (in)	70 (2.8)
Stroke	mm (in)	586 (23.1)
Working pressure	MPa (bar)	26 (260)
Maximum flow	l/min (gal/min)	340 (89.8)
Maximum articulation	± °	37

Service Refill

Service accessibility: Large, easy-to-open service doors with gas struts. Swing-out radiator grill. Fluid filters and component breather filters promote long service intervals. Possibility to monitor, log, and analyze data to facilitate troubleshooting.

Fuel tank	l (gal)	581 (153.5)
DEF/AdBlue® tank	l (gal)	53 (14)
Engine coolant	l (gal)	68 (18)
Hydraulic oil tank	l (gal)	365 (96.4)
Transmission oil	l (gal)	79 (20.9)
Engine oil	l (gal)	55 (14.5)
Axle oil front	l (gal)	155 (40.9)
Axle oil rear	l (gal)	155 (40.9)

Hydraulic system

System supply: Two load-sensing axial piston pumps with variable displacement. The steering function always has priority from one of the pumps. Valves: Double-acting 2-spool valve. The main valve is controlled by an electric pilot. Lift function: The valve has four positions; lift, hold, lower, and float position. Inductive/magnetic automatic boom kickout can be switched on and off and is adjustable to any position between maximum reach and full lifting height. Tilt function: The valve has three functions; rollback, hold, and dump. Inductive/magnetic automatic bucket positioner can be switched on and off. Cylinders: Double-acting cylinders for all functions. Filter: Full-flow filtration through 20 micron (absolute) filter cartridge. Hydraulic oil cooler: Aircooled oil cooler mounted on radiator.

Working pressure maximum, pump 1 for working hydraulic system	MPa (bar)	25 (250)
---	-----------	----------

Flow	l/min (gal/min)	256 (67.2)
at	MPa (bar)	10 (100)

engine speed	r/min (r/s)	1,800 (30)
--------------	-------------	------------

Working pressure maximum, pump 2 for steering-, brake-, pilot- and working hydraulic system	MPa (bar)	26 (260)
---	-----------	----------

Flow	l/min (gal/min)	354 (93.5)
at	MPa (bar)	10 (100)

engine speed	r/min (r/s)	1,800 (30)
--------------	-------------	------------

Working pressure maximum, pump 3 for brake- and cooling fan system	MPa (bar)	26 (260)
--	-----------	----------

Flow	l/min (gal/min)	84 (22.2)
at	MPa (bar)	10 (100)

engine speed	r/min (r/s)	1,800 (30)
--------------	-------------	------------

Cycle times

Lift	s	8
------	---	---

Tilt	s	1.9
------	---	-----

Lower, empty	s	4.7
--------------	---	-----

Total cycle time	s	14.6
------------------	---	------

Raise and tilt cycle times with load according to ISO 14397 and SAE J818

Lift Arm System

Z-bar linkage system with high breakout forces. The lift arms are single plate construction with a high-strength steel cast cross tube. The single bell crank and bucket link are nodular iron castings.

Lift cylinders		2
----------------	--	---

Cylinder bore	mm (in)	200 (7.9)
---------------	---------	-----------

Piston rod diameter	mm (in)	110 (4.3)
---------------------	---------	-----------

Stroke	mm (in)	1,264 (49.8)
--------	---------	--------------

Tilt cylinder		1
---------------	--	---

Cylinder bore	mm (in)	260 (10.2)
---------------	---------	------------

Piston rod diameter	mm (in)	120 (4.7)
---------------------	---------	-----------

Stroke	mm (in)	728 (28.7)
--------	---------	------------

Brake system

Service brake: Service brakes are dual circuit all-hydraulic multidisc brakes with nitrogen-charged accumulators and automatic slack adjusters. Outboard-mounted oil-cooled, wet disc brakes at each wheel. Transmission disengagement during braking can be preselected in Contronic.

Parking brake: Wet multi-disc type in transmission housing. Spring-applied, electro-hydraulically released with a switch on instrument panel. Applies automatically when the key is turned off.

Secondary brake: Dual circuit axle-by-axle system. Actuated by service brake pedal. Low pressure alarm. Dead engine braking capability provided by three nitrogen-charged accumulators.

Standard: The brake system complies with the requirements of ISO 3450:1996.

Number of brake discs per wheel front/rear	11/11
--	-------

Accumulators	l (gal)	8x1 (8 x 0.26)
--------------	---------	----------------

Accumulators for parking brake	l (gal)	1 x 0.5 (1 x 0.13)
--------------------------------	---------	--------------------

Cab

Instrumentation: All important information is centrally located in the operator's field of vision. Display for Contronic monitoring system.

Heater and defroster: Heater coil with filtered fresh air, fan with auto function and 11 manually selectable steps, defroster vents for all window areas.

Operator's seat: Operator's seat with adjustable suspension and retractable seatbelt. The seat is mounted on a bracket on the rear wall and floor. The forces from the retractable seatbelt are absorbed by the seat rails.

Standard: The cab is tested and approved according to ROPS (ISO 3471, SAE J1040), FOPS (ISO 3449). The cab meets with requirements according to ISO 6055 ("Operator overhead protection - Industrial trucks") and SAE J386 ("Operator Restraint System").

Refrigerant of the type R134a is used when this machine is equipped with air conditioning. Contains fluorinated greenhouse gas R134a, Global Warming Potential 1.430 t CO₂-eq

Emergency exit: Use emergency hammer to break window

Ventilation	m ³ /min (yd ³ /min)	9 (11.8)
-------------	--	----------

Heating capacity	kW	13
------------------	----	----

Air conditioning	kW	8
------------------	----	---

Sound Level

Sound level in cab according to ISO 6396/SAE J2105

LpA	dB(A)	72
-----	-------	----

External sound level according to ISO 6395/SAE J2104

LwA	dB(A)	111
-----	-------	-----

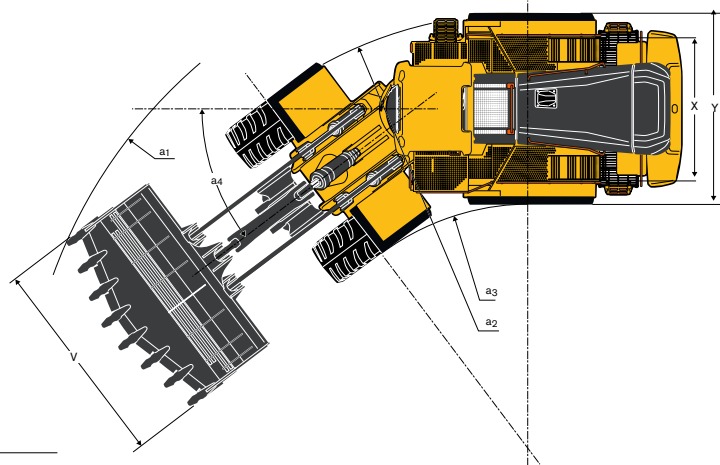
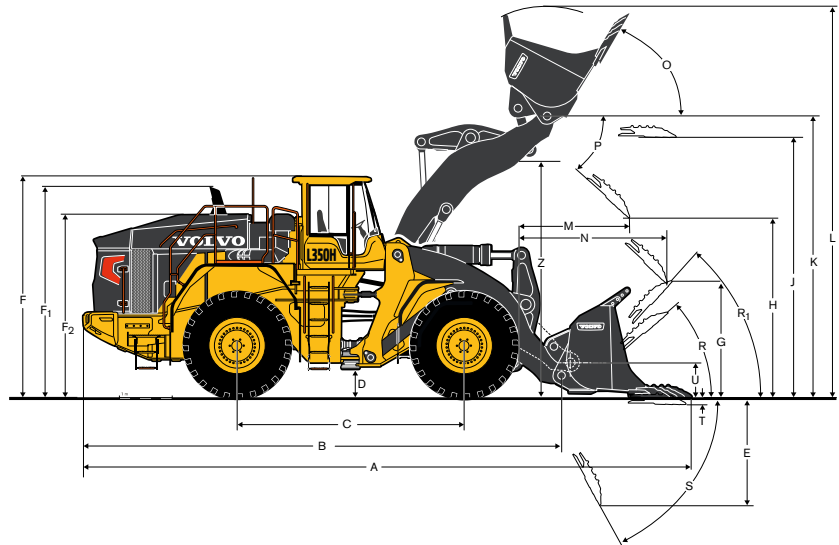
Specifications

Tires: 875/65 R33** RL-5K L5 Goodyear

			Standard boom		Long boom	
B	mm	ft in	9,130	30' 0"	9,556	31' 4"
C	mm	ft in	4,300	14' 1"	-	-
D	mm	ft in	540	1' 9"	-	-
F	mm	ft in	4,180	13' 8"	-	-
F ₁	mm	ft in	3,990	13' 1"	-	-
F ₂	mm	ft in	3,450	11' 4"	-	-
G	mm	ft in	2,135	7' 0"	-	-
J	mm	ft in	4,910	16' 1"	5,382	17' 8"
K	mm	ft in	5,330	17' 6"	5,798	19' 0"
O	°		60		58	
P _{max}	°		45		-	
R	°		44		45	
R1*	°		48		50	
S	°		66		72	
T	mm	ft in	136	0' 5.4"	143	0' 5.6"
U	mm	ft in	620	2' 0"	739	2' 5"
V	mm	in	4,110	161"	-	-
X	mm	ft in	2,720	8' 11"	-	-
Y	mm	ft in	3,630	11' 11"	-	-
Z	mm	ft in	4,460	14' 8"	4,880	16' 0"
a2	mm	ft in	8,240	27' 0"	-	-
a3	mm	ft in	4,610	15' 2"	-	-
a4	±°		37		-	-

*Carry position SAE

Where applicable, specifications and dimensions are according to ISO 7131, SAE J732, ISO 7546, SAE J742, ISO 14397, SAE J818.



L350H BUCKETS	Material density: t/m ³ (lb/ft ³)						
	0.8 (1,349)	1.0 (1,686)	1.2 (2,024)	1.4 (2,361)	1.6 (2,698)	1.8 (3,035)	2.0 (3,373)
Rehandling							
8.8 m ³ (11.5 yd ³) STE P T SEG							
9.4 m ³ (12.3 yd ³) STE P BOE							
10.7 m ³ (14 yd ³) STE P BOE							
General purpose							
7.3 m ³ (9.5 yd ³) STE P BOE							
7.7 m ³ (10.1 yd ³) STE P T SEG							
8.4 m ³ (11 yd ³) STE P BOE							
Rock							
7.7 m ³ (10.1 yd ³) SPN P T SEG							
6.9 m ³ (9 yd ³) STERO P T SEG							
Light material							
12.7 m ³ (16.6 yd ³) LM P							
<div> <div>Bucket fill</div> <div>110% 105% 100% 95%</div> <div>Pin-on</div> </div>							

How to read bucket fill factor



Bucket Selection Chart

The volume handled varies with the bucket fill and is often greater than indicated by the bucket's ISO/SAE volume. The table shows optimum bucket choice with regard to the material density.

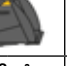



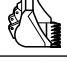


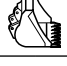

Material	Bucket fill, %	Material density	
		t/m ³	lb/ft ³
Earth	110-115	1.4-1.6	2,360 - 2,697
Clay	110-120	1.4-1.6	2,360 - 2,697
Sand	100-110	1.6-1.9	2,360 - 2,697
Gravel	100-110	1.7-1.9	2,697 - 3,203
Rock	75-100	1.5-1.9	2,528 - 3,203

The size of rock buckets is optimized for optimal penetration and filling capability rather than the density of the material.

L350H

Standard boom				Rehandling (L4 Tires)						General purpose (L4 Tires)						Rock (L5 Tires)				Light material	
Tires 875/65 R33, Counterweight rehandling installed.																					
				8.8 m³ (11.5 yd³) STE P BOE		9.4 m³ (12.3 yd³) STE P BOE		10.7 m³ (14 yd³) STE P BOE		7.3 m³ (9.5 yd³) STE P BOE		7.7 m³ (10.1 yd³) STE P T SEG		8.4 m³ (11 yd³) STE P BOE		7.7 m³ (10.1 yd³) SPN P T SEG		6.9 m³ (9 yd³) STE P T SEG		12.7 m³ (16.6 yd³) LM P	
Volume heaped ISO/SAE		m³	yd³	8.8	11.5	9.4	12.3	10.7	14.0	7.3	9.5	7.7	10.1	8.4	11.0	7.7	10.1	6.9	9.0	12.7	16.6
Volume at 110% fill factor		m³	yd³	9.7	12.7	10.3	13.5	11.8	15.4	8.0	10.5	8.5	11.1	9.2	12.1	8.5	11.1	7.6	9.9	14.0	18.3
mT1	Static tipping load, straight machine	kg	lb	42,460	93,620	42,160	92,960	41,530	91,560	43,660	96,270	43,450	95,810	43,090	96,010	43,040	94,900	43,550	96,020	42,360	93,410
mT2	Static tipping load at 35°. Turn	kg	lb	37,660	83,040	37,370	82,400	36,760	81,060	38,820	85,590	38,620	85,150	38,720	84,380	38,190	84,210	38,680	85,290	37,560	82,810
mT3	Static tipping load at full turn	kg	lb	37,110	81,830	36,820	81,200	36,220	79,860	38,270	84,380	38,070	83,940	37,720	83,170	37,640	82,990	38,130	84,070	37,010	81,600
FBr	Breakout force	kN	lbf	391	87,880	376.9	84,740	350.9	78,910	445.5	100,180	432.6	92,270	412.1	92,670	336.5	75,660	354.1	79,620	374.7	84,240
A	Overall length	mm	ft in	11,120	36' 6"	11,200	36' 9"	11,350	37' 3"	11,190	36' 9"	11,240	36' 11"	11,330	37' 2"	11,690	38' 4"	11,580	38' 0"	11,190	36' 9"
E	Digging depth, max dump (S)	mm	ft in	1,730	5' 8"	1,800	5' 11"	1,930	6' 4"	1,790	5' 10"	1,830	6' 0"	1,910	6' 3"	2,220	7' 3"	2,120	6' 11"	1,800	5' 11"
H*)	Dump clearance	mm	ft in	3,670	12' 0"	3,610	11' 10"	3,510	11' 3"	3,620	11' 10"	3,580	11' 9"	3,520	11' 7"	3,300	10' 10"	3,380	11' 1"	3,590	11' 10"
L	Overall operating height	mm	ft in	7,270	23' 10"	7,350	24' 1"	7,510	24' 8"	7,080	23' 3"	7,140	23' 5"	7,240	23' 9"	7,400	24' 3"	7,300	23' 11"	7,650	25' 1"
M*)	Dump reach	mm	ft in	1,850	6' 1"	1,900	6' 3"	2,000	6' 7"	1,880	6' 2"	1,920	6' 4"	1,980	6' 6"	2,250	7' 4"	2,170	7' 1"	1,900	6' 3"
N*)	Reach at 45deg discharge, Pos. G	mm	ft in	2,720	8' 11"	2,760	9' 0"	2,820	9' 3"	2,740	9' 0"	2,760	9' 1"	2,800	9' 2"	2,990	9' 10"	2,940	9' 8"	2,710	8' 11"
V	Bucket width	mm	ft in	3,970	156"	3,970	156"	3,970	156"	3,970	156"	3,970	156"	3,970	156"	4,110	161"	4,110	161"	4,500	177"
a1	Outer clearance circle (diameter)	mm	ft in	18,120	59' 5"	18,160	59' 7"	18,230	59' 7"	18,170	59' 7"	18,170	59' 8"	18,220	60' 0"	18,540	60' 10"	18,480	60' 3"	18,660	61' 3"
Operating weight without load		kg	lb	52,820	116,460	52,970	116,800	53,290	115,730	52,600	115,730	52,600	115,980	52,780	116,380	54,070	119,220	53,820	118,670	53,450	117,850

L350H

Long boom			Rehandling						General purpose						Rock				Light material		
Tires 875/65 R33, Counterweight rehandling included.																					
			8.8 m³ 11.5 yd³) STE P BOE		9.4 m³ (12.3 yd³) STE P BOE		10.7 m³ (14 yd³) STE P BOE		7.3 m³ (9.5 yd³) STE P BOE		7.7 m³ (10.1 yd³) STE P T SEG		8.4 m³ (11 yd³) STE P BOE		7.7 m³ (10.1 yd³) SPN P T SEG		6.9 m³ (9 yd³) STE P T SEG		12.7 m³ (16.6 yd³) LM P		
Volume heaped ISO/SAE		m³	yd³	8.8	11.5	9.4	12.3	10.7	14.0	7.3	9.5	7.7	10.1	8.4	11.0	7.7	10.1	6.9	9.0	12.7	16.6
Volume at 110% fill factor		m³	yd³	9.7	12.7	10.3	13.5	11.8	15.4	8.0	10.5	8.5	11.1	9.2	12.1	8.5	11.1	7.6	9.9	14.0	18.3
mT1	Static tipping load, straight machine	kg	lb	36,970	81,520	36,700	80,930	36,130	79,670	38,000	83,800	37,810	83,390	37,490	82,660	37,430	82,540	37,890	83,550	36,800	81,140
mT2	Static tipping load at 35°. Turn	kg	lb	32,670	72,040	32,410	71,470	31,860	70,260	33,680	74,260	33,490	73,860	33,180	73,160	33,110	73,000	33,550	73,980	32,500	71,650
mT3	Static tipping load at full turn	kg	lb	32,180	70,960	31,920	70,390	31,380	69,190	33,180	73,710	33,000	72,770	32,690	72,080	32,610	71,910	33,060	72,890	23,010	70,570
FBr	Breakout force	kN	lbf	355	79,900	342.8	77,070	319.4	71,810	405.4	91,140	393.7	88,520	375.3	84,380	305.9	68,790	321.8	72,360	340.1	76,470
A	Overall length	mm	ft in	11,540	37' 10"	11,610	38' 1"	11,760	38' 7"	11,600	38' 1"	11,650	38' 3"	11,740	38' 6"	12,110	39' 9"	11,990	39' 4"	11,610	38' 1"
E	Digging depth, max dump (S)	mm	ft in	1,800	5' 11"	1,870	6' 2"	2,010	6' 7"	1,860	6' 1"	1,900	6' 3"	1,990	6' 6"	2,310	7' 7"	2,220	7' 3"	1,870	6' 2"
H*)	Dump clearance	mm	ft in	4,130	13' 7"	4,080	13' 5"	3,980	13' 1"	4,090	13' 5"	4,050	13' 4"	3,990	13' 1"	3,780	12' 5"	4,170	12' 8"	4,080	13' 5"
L	Overall operating height	mm	ft in	7,740	25' 6"	7,820	25' 9"	7,980	26' 2"	7,550	24' 10"	7,610	25' 1"	7,710	25' 5"	7,870	25' 10"	7,770	25' 6"	8,120	26' 8"
M*)	Dump reach	mm	ft in	1,860	6' 1"	1,910	6' 2"	2,010	6' 6"	1,890	6' 2"	1,930	6' 3"	1,990	6' 6"	2,260	7' 5"	2,180	7' 2"	1,930	6' 4"
N*)	Reach at 45deg discharge, Pos. G	mm	ft in	3,070	10' 1"	3,110	10' 2"	3,180	10' 5"	3,090	10' 2"	3,120	10' 2"	3,160	10' 4"	3,350	11' 0"	3,330	10' 10"	3,070	10' 1"
V	Bucket width	mm	ft in	3,970	156"	3,970	156"	3,970	156"	3,970	156"	3,970	156"	3,970	156"	4,110	161"	3,970	156"	4,500	177"
a1	Outer clearance circle (diameter)	mm	ft in	18,440	60' 6"	18,470	60' 7"	18,550	61' 9"	18,460	60' 7"	18,490	60' 8"	18,530	60' 10"	18,860	61' 11"	18,800	61' 8"	18,970	62' 3"
Operating weight without load		kg	lb	53,060	117,000	53,210	117,330	53,530	118,040	52,730	116,270	52,840	116,510	53,020	116,920	54,310	119,760	54,060	119,200	53,690	118,390

*) Measured to the tip of the bucket teeth or bolt-on edge. Dump height to bucket edge.

Note: This only applies to genuine Volvo attachments. Measured at 45° dump angle. (Spade nose buckets at 42°.)

Supplemental Operating Data

	Width over tires		Ground clearance		Operating weight		Static tipping load, full turn			
							Standard boom		Long boom	
	mm	in	mm	in	kg	lb	kg	lb	kg	lb
36/65 R33 TXTL L4 Michelin	10	0.4	-20	-0.8	-1,140	-2,513	-1,030	-2,271	-910	-2,006
35/65 R33 XLD D2 L5 Michelin	10	0.4	-20	-0.8	-440	-970	-580	-1,279	-510	-1,124
35/65 R33 X-Mine D2 L5 Michelin	20	0.8	-20	-0.8	260	573	-50	-110	-40	-88

Equipment

STANDARD EQUIPMENT

Engine

Three stage air cleaner, pre-cleaner, primary and secondary filter
Indicator glass for coolant level
Preheating of induction air
Fuel pre-filter with water trap
Fuel filter
Crankcase breather oil trap

Drivetrain

Automatic Power Shift (APS) with operator controlled transmission disengagement
when braking and mode selector with AUTO mode
Fully automatic gear shifting, 1-4
Pulse Width Modulation (PWM) controlled gear shifting
Torque converter with Lock-Up
Automatic Lock-Up shifting, 3-4 (gear selector in 4) and 2 (gear selector in 2)
Forward and reverse switch by hydraulic lever console
Indicator glass for transmission oil level

Electrical system

24 V, pre-wired for optional accessories
Alternator 24V/ 80A
Battery disconnect switch with removable key
Fuel gauge
Hour meter
Electric horn
Instrument cluster:
Fuel level
Transmission temperature
Coolant temperature
Instrument lighting
Lighting:
- Twin halogen front headlights with high and low beams
- Parking lights
- Double brake and tail lights
- Turn signals with flashing hazard light function
- Work lamp, front on cab, 2 Halogen lamps, std
- Work lamp, rear in grille, 4 Halogen lamps, std

STANDARD EQUIPMENT

Contronic monitoring system

Monitoring and logging of machine data
Contronic display
Fuel consumption
Ambient temperature
Clock
Brake test
Test function for warning and indicator lights
Warning and indicator lights:
Battery charging
Parking brake
Warning and display message:
- Engine coolant temperature
- Charge-air temperature
- Engine oil temperature
- Engine oil pressure
- Transmission oil temperature
- Transmission oil pressure
- Hydraulic oil temperature
- Brake pressure
- Parking brake applied
- Parking brake NOT applied
- Brake charging
- Overspeed at direction change
- Axle oil temperature
- Steering pressure
- Crankcase pressure
Level warnings:
- Low fuel level
- Engine oil level
- Engine coolant level
- Transmission oil level
- Hydraulic oil level
- Washer fluid level
Engine torque reduction in case of malfunction indication:
- High engine coolant temperature
- High engine oil temperature
- Low engine oil pressure
- High crankcase pressure
- High charge-air temperature
Engine shutdown to idle in case of malfunction indication:
- High transmission oil temperature
- Slip in transmission clutches
Keypad, background lit
Start interlock when gear is engaged

STANDARD EQUIPMENT
Hydraulic system
Main valve, double-acting 2-spool with electric pilots
Variable displacement axial piston pumps (3) for:
Steering system, working hydraulics
Working hydraulics, brakes
Cooling fan, brakes
Electric-hydraulic servo control
Electric level lock
Boom kick-out, automatic, adjustable from cab
Return-to-dig, automatic, adjustable from cab
Bucket positioner, automatic, adjustable from cab
Double-acting hydraulic cylinders with end-damping
Indicator glass for hydraulic oil level
Hydraulic oil cooler
Brake system
Wet oil circulation-cooled disc brakes on all four wheels
Dual brake circuits
Dual brake pedals
Secondary brake system
Parking brake, electric-hydraulic
Brake wear indicators
Cab
ROPS (ISO 3471), FOPS (ISO 3449)
Acoustic inner lining
Cigarette lighter, 24 V power outlet
Lockable door
Cab heating with fresh air inlet and defroster
Fresh air inlet with two filters
Automatic climate control (ACC)
Floor mat
Interior light
Rear view mirror, interior
Dual exterior rear-view mirrors
Sliding window, right side
Tinted safety glass
Seat-mounted adjustable lever console, working hydraulics
Adjustable steering wheel
Storage compartment
Document pocket
Sun visor
Beverage holder
Windshield washer front and rear
Windshield wipers front and rear
Interval function for front and rear wipers
Service platforms with slip protected surfaces on front and rear fenders
Comfort Drive Control (CDC)
Remote door opener

STANDARD EQUIPMENT
Service and maintenance
Engine oil remote drain and fill
Transmission oil remote drain and fill
Grouped lubrication points, ground accessible
Pressure check connections: transmission and hydraulic, quick-connect, grouped on console for easy access
Tool box, lockable
Wheel nut wrench kit
External equipment
Fenders, front with rubber extensions
Viscous cab mounts
Rubber engine and transmission mounts
Lifting eyes
Easy-to-open side panels with gas struts
Frame, joint lock
Vandalism lock prepared for:
- Batteries
- Engine compartment
- Radiator
Tie-down eyes
Recovery eyes
Tow hitch

Equipment

OPTIONAL EQUIPMENT

Engine

Air pre-cleaner, oil-bath type
Air pre-cleaner, cyclone type
Cooling package: Radiator and charge air cooler, corrosion-protected
Engine block heater, 230 V
Engine block heater, 120V, USA
Engine auto shutdown
Hand throttle control
Fuel fill strainer
Fast fill fuel system
Fuel heater
Reversible cooling fan
Max. fan speed, hot climate

Drivetrain

Limited Slip, front axle
Limited Slip, rear axle
Limited Slip, front and rear axle
Speed limiter, 20 km/h (12.4 mi/h)
Speed limiter, 30 km/h (18.6 mi/h)

Electrical system

Cab heater, power outlet 240V
Travel lights:
- Headlights, assym. left
- Headlights, assym. right LED
- Headlights, assym. left LED
Tail lights, LED
Work lights, Halogen:
- Work lamp, rear on cab, 2 Halogen lamps
- Work lamp, front, on cab, dual, 4 Halogen lamps
- Work lamp, rear on cab, dual, 4 Halogen lamps
- Work lamp, front above head lamps, 2 Halogen lamps
Work lights, LED:
- Work lamp, front above headlamps, 2 LED lamps
- Work lamp, front on cab, 2 LED lamps
- Work lamp, front on cab, 4 LED lamps
- Work lamp, rear on cab, 2 LED lamps
- Work lamp, rear on cab, 4 LED lamps
- Work lamp, side on cab, 4 LED lamps
- Work lamp, side on cab, 1 LED lamp
- Work lamp, rear in grille, 4 LED lamps
- LED Light packages
Warning beacon(flasher), LED
Reverse warning light, Strobe
Reverse alarm, audible, multi-frequency (white noise)
Reverse alarm, audible
Jump start connector NATO
Emergency stop
Electrical distribution unit 24 volt
Alternator 120 amp, heavy-duty
Anti-theft device

OPTIONAL EQUIPMENT

Hydraulic system

Boom suspension system with single-acting lift function
Arctic kit, pilot hoses, brake accumulators and hydraulic oil
Hydraulic 2 functions, Single lever control
Hydraulic 3 functions, Single lever control
3rd electro-hydraulic function
3rd electro-hydraulic function for long boom
Attachment bracket
Separate attachment locking
Biodegradable hydraulic fluid
Fire-resistant hydraulic fluid
Hot climate hydraulic fluid
Mineral oil for cold climate

Brake system

Oil coolers for front and rear axles

Cab

Radio with Bluetooth/USB/AUX
Radio installation kit incl. 11 A, 12 V outlet, left side
Radio installation kit incl. 11 A, 12 V outlet, right side
Rear-view camera incl. monitor, colour
Forward camera, colour
Rear-view mirrors, electrically adjustable and heated
Asbestos dust protection filter
Carbon filter
Automatic climate control panel, with Fahrenheit scale
Lunchbox holder
Universal key EU, remote door open
Universal key US, remote door open
Steering wheel knob
Sun blind, rear window
Sun blind, side windows
Timer cab heating
Window sliding, door
Operator's seat, Volvo air susp, heavy-duty, high back, heat, for CDC
Parking brake alarm, audible for air susp seats
Operator's seat, Premium Comfort
Operator's seat, (air seat std) 3-point seat belt and CDC
Ashtray
Anchorage for Operator's manual
Forward view mirror

Service and maintenance

Tool kit
Automatic lubrication system
Automatic lubrication system for long boom
Refill pump for automatic lubrication system
Oil sampling valve

OPTIONAL EQUIPMENT
Protective equipment
Guards for front headlights
Tail light guards, heavy-duty
Guards for tail lights, heavy-duty
Guards for rear work lights
Radiator grille guard
Cab roof, heavy duty
Windows, side and rear guards
Windshield guard
Belly guard, front
Belly guard, rear
Fire extinguisher
Bracket for fire extinguisher
External equipment
Long boom
Other equipment
Secondary steering with automatic test function
Counterweight, re-handling
Logger version
Block handler kit
Block handler kit, heavy-duty
CE-marking
Decals, USA
Sound decal, EU
Cleaner kit, with air blow gun (Stage V/Tier4f)
Reflecting stickers (stripes), machine contour Cab
CareTrack

OPTIONAL EQUIPMENT
Tires and Rims
35/65 R33 (875/65 R33):
- L4
- L5
Rims, 33-28.00/3,5:
- Five piece, heavy-duty
Attachments
Buckets (pin-on):
- Rock, straight edge
- Rock, spade nose
- Rock, side-dump, spade nose
- General purpose, straight edge
- Rehandling bucket, straight edge
- Light material, straight edge
Wear parts:
- Adapters for teeth, weld-on
- Teeth
- Segments, bolt-on
- Edge savers, bolt-on (reversible)
Block handling equipment (hook-on):
- Rock bucket, spade nose
- Stone fork
- Breaker tine
- Rake

SELECTION OF VOLVO OPTIONAL EQUIPMENT

Boom suspension system



Long boom



Limited slip differentials



Axle oil cooler



Fast fill fueling system



Radar detect system



Not all products are available in all markets. Under our policy of continuous improvement, we reserve the right to change specifications and design without prior notice. The illustrations do not necessarily show the standard version of the machine.



Volvo Construction Equipment

www.volvoce.com